

# STANDARD SOLUTION

## 300-2000 IPC



Alcon Wireless Pvt. Ltd.



# CONTENTS

---

**01** BACKGROUND

**02** SYSTEM STRUCTURE

**03** PRODUCT SELECTION

**04** ADVANTAGES

# CONTENTS

---

## 01 BACKGROUND

---



For a large scenario surveillance,  
which products are necessary?



**Chain retail store**



**Chain theater**



**Multiple scenic spots**



**Public place**



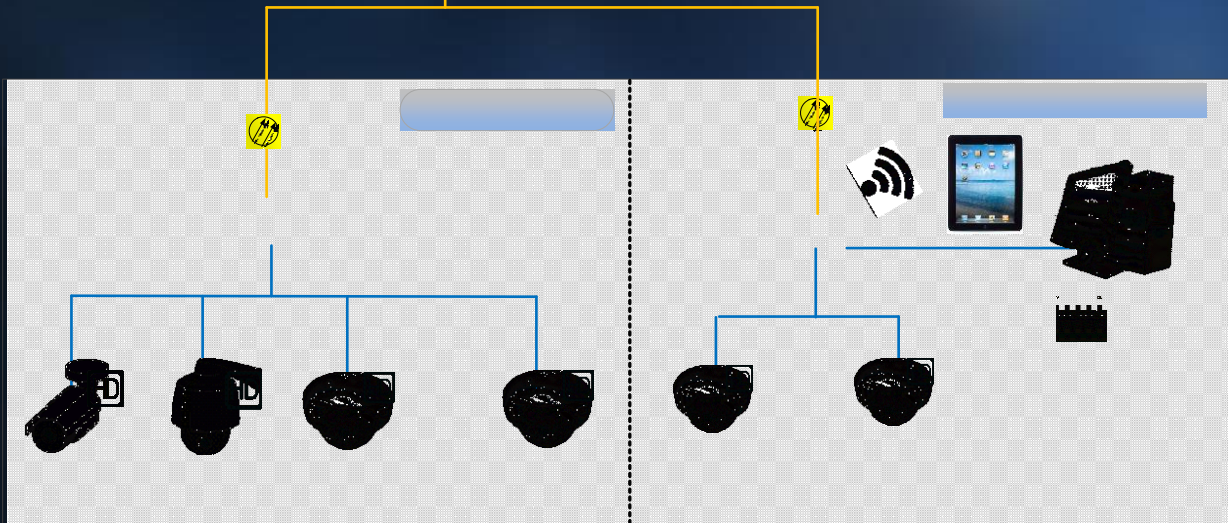
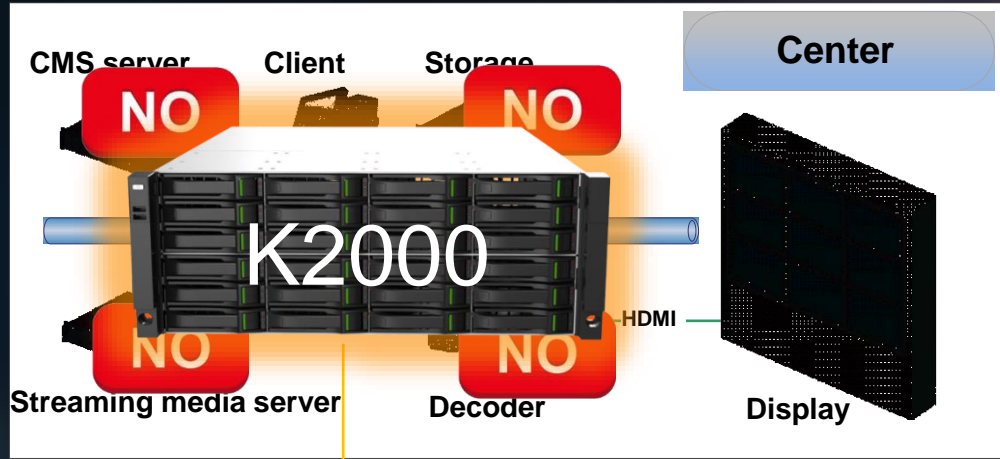
**Multiple communities**



**Multiple office buildings**



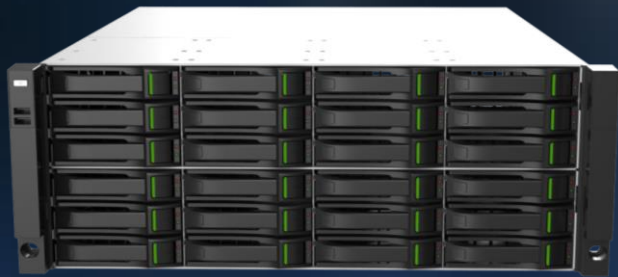
# WHICH FACTOR AFFECTS OUR CHOICE OF SOLUTIONS MORE?



Why the system needs so many equipments?  
 Our sales team don't know how to choose storage equipment, what should we do?  
 Our sales team don't know when the streaming server is needed, what should we do?

Our sales team don't know how to choose video wall decoder, what should we do?

# Key features of K2000



## Appearance

4U height, front install 24 HDD, build-in indicator

## Interface

Front-in 2\*USB, back-in 2\*USB 3.0 . 2\*HDMI, 1\*VGA, 4\*1000Mb Ethernet ports, 1\*RS232, Alarm I/O 8/4

## Bandwidth

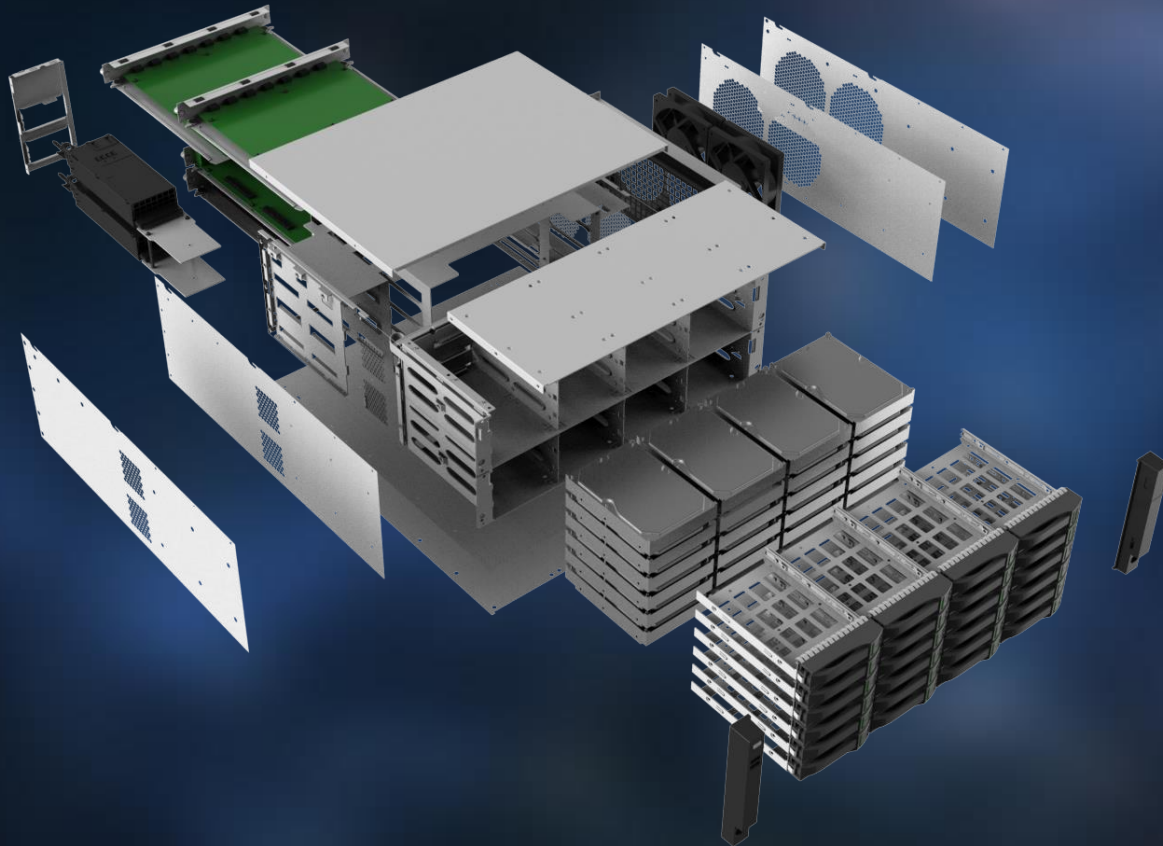
Video input bandwidth 512MB, storage bandwidth 512MB, support 256-ch 2MP recording at the same time

## Security mechanism

Standard power supply, support redundant power supply  
Support RAID0/1/5/6/10/50/60, efficiently ensure data security

# Key features of K2000

Powerful design



**All hardware modular**



**Wireless cables**



**"Permeable" heat**



**Dissipation design**

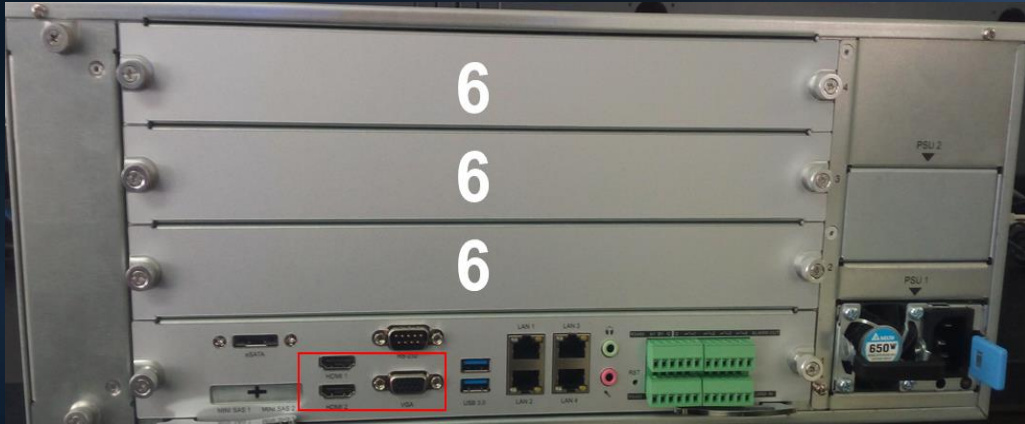


**Escort the hard drive**



# Key features of K2000

Powerful decoding ability



## Decoding ability

Support 3 decoder boards, maximum support to connect with 21 screens, support video output up to 160-ch\*1080p

3 build-in video output interface, 2 of them are simultaneous. Support to connect with 2 screens, video output 16-ch\*1080p



# CONTENTS

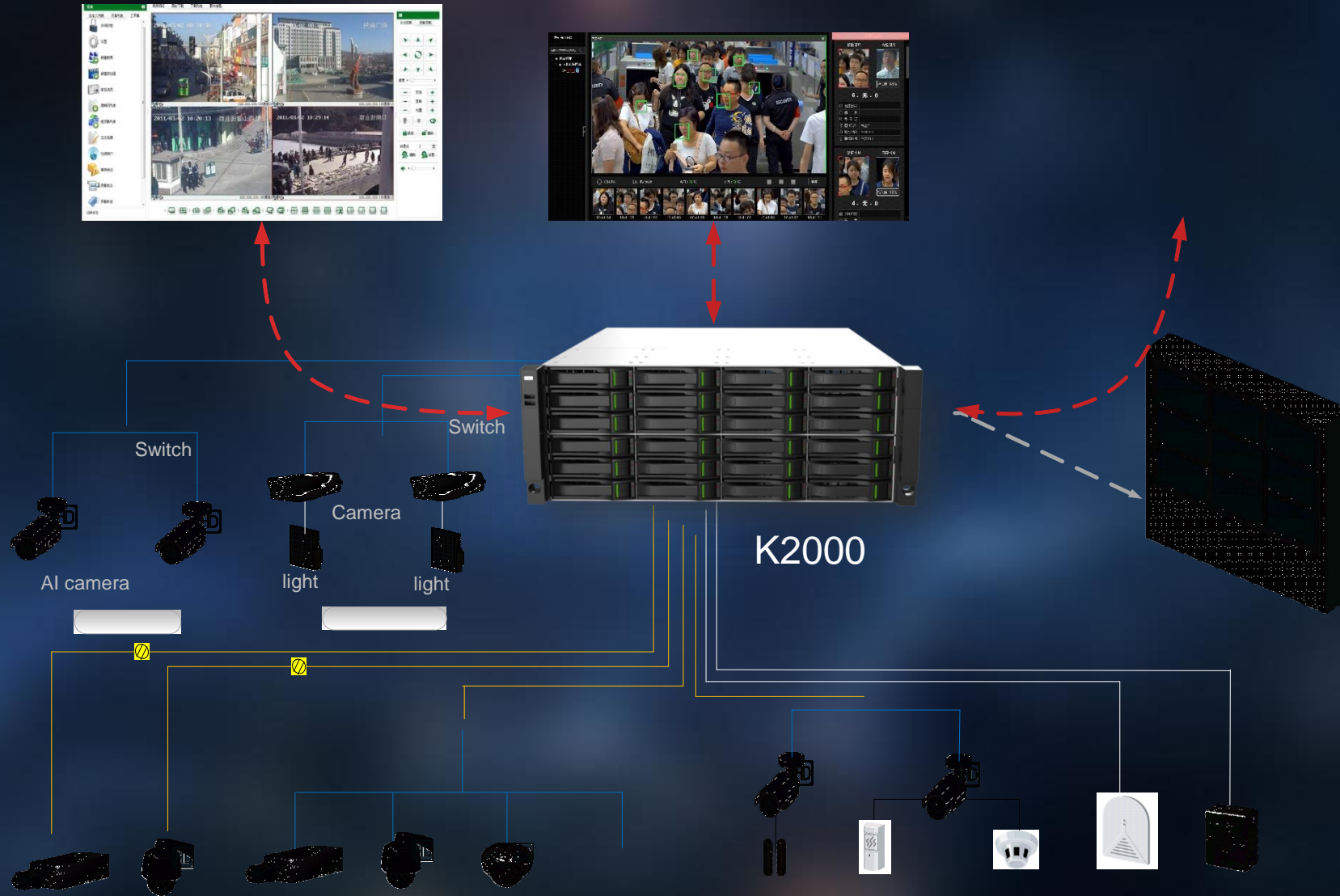
---

## 02 SYSTEM STRUCTURE



# Stand-alone management system structure

Stand-alone system structure



# Stand-alone management system structure

Stand-alone video wall control

LCD 1

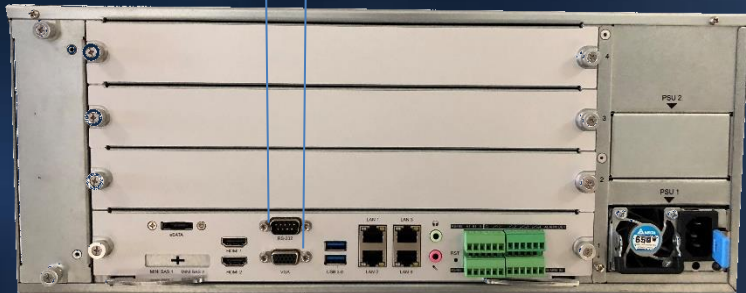


LCD 2

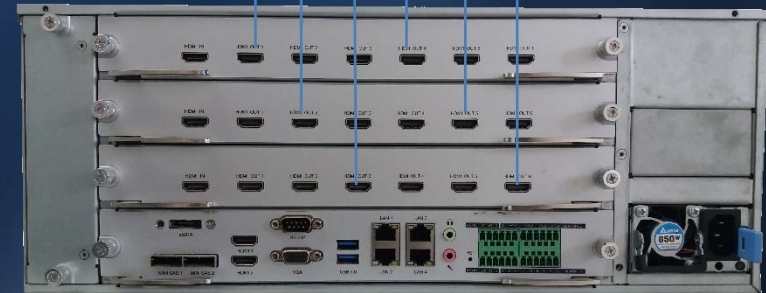


HDMI1

HDMI2

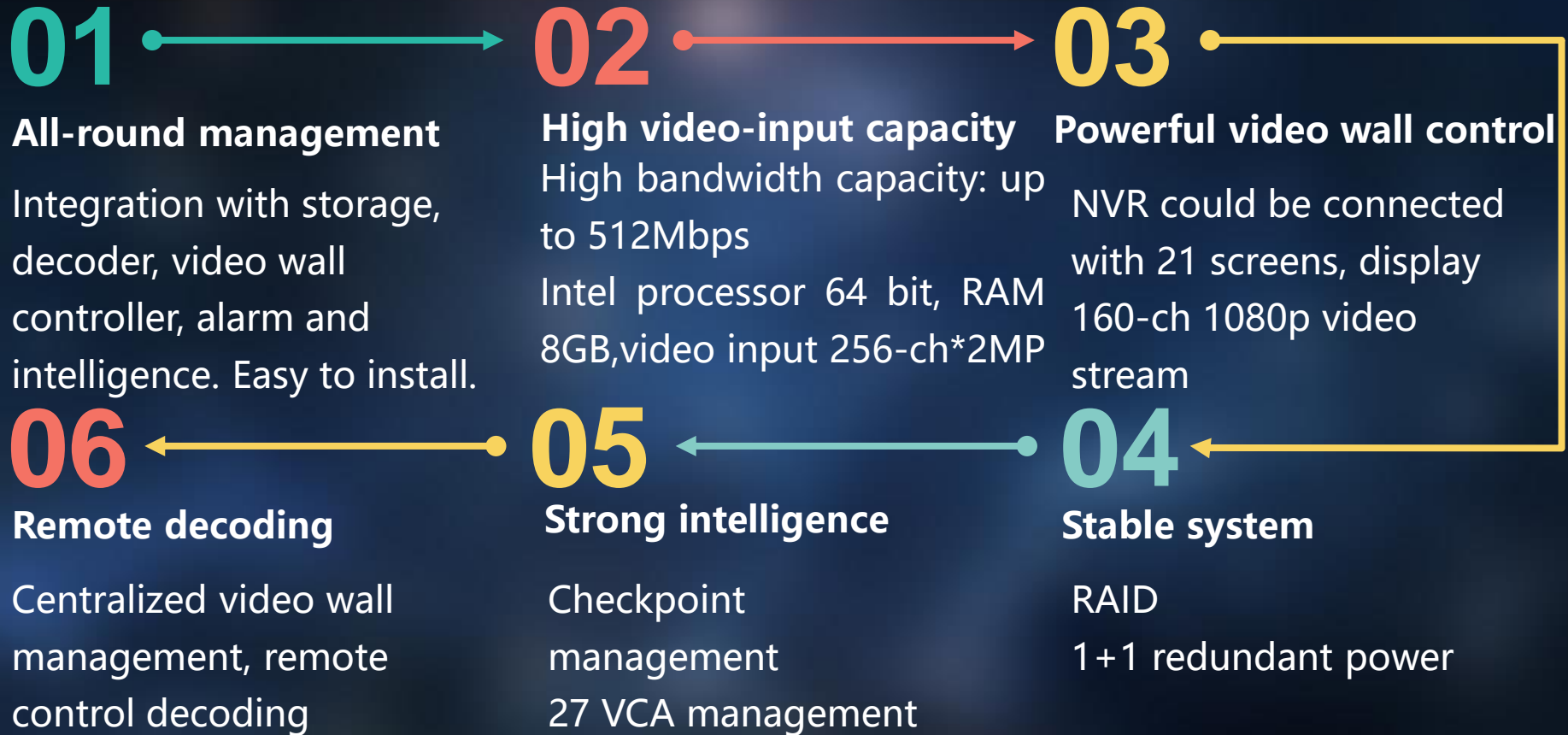


- Built-in 2-screen 16-channel 1080p decoding capability.
- The function of simple combination and control can be realized.



- 3 decode boards can be inserted, each with 1 in and 6 out.
- Expand to a maximum of 20 screens, 160 channels, 1080p.
- Decoding board model: AL-NVR926S5-V

# Stand-alone management system structure





# Centralized management system structure

Centralized management alarm



- Support various types of front-end equipment access, bullet, dome, fisheye, PTZ, etc.
- Support management alarm from front-end

# Centralized management system structure

Centralized management storage



- The camera is preferentially connected to NVR or centralized storage, and then NVR is connected to K2000 for unified management to solve the problem of limited self-storage.

# Centralized management system structure

Centralized management video wall

Sub-center TV wall 1



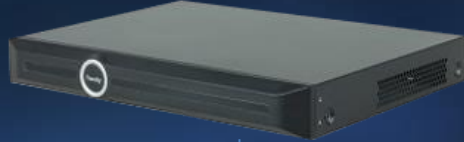
Central TV wall



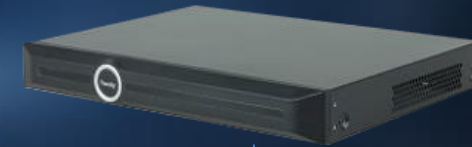
Sub-center TV wall 2



Decoder

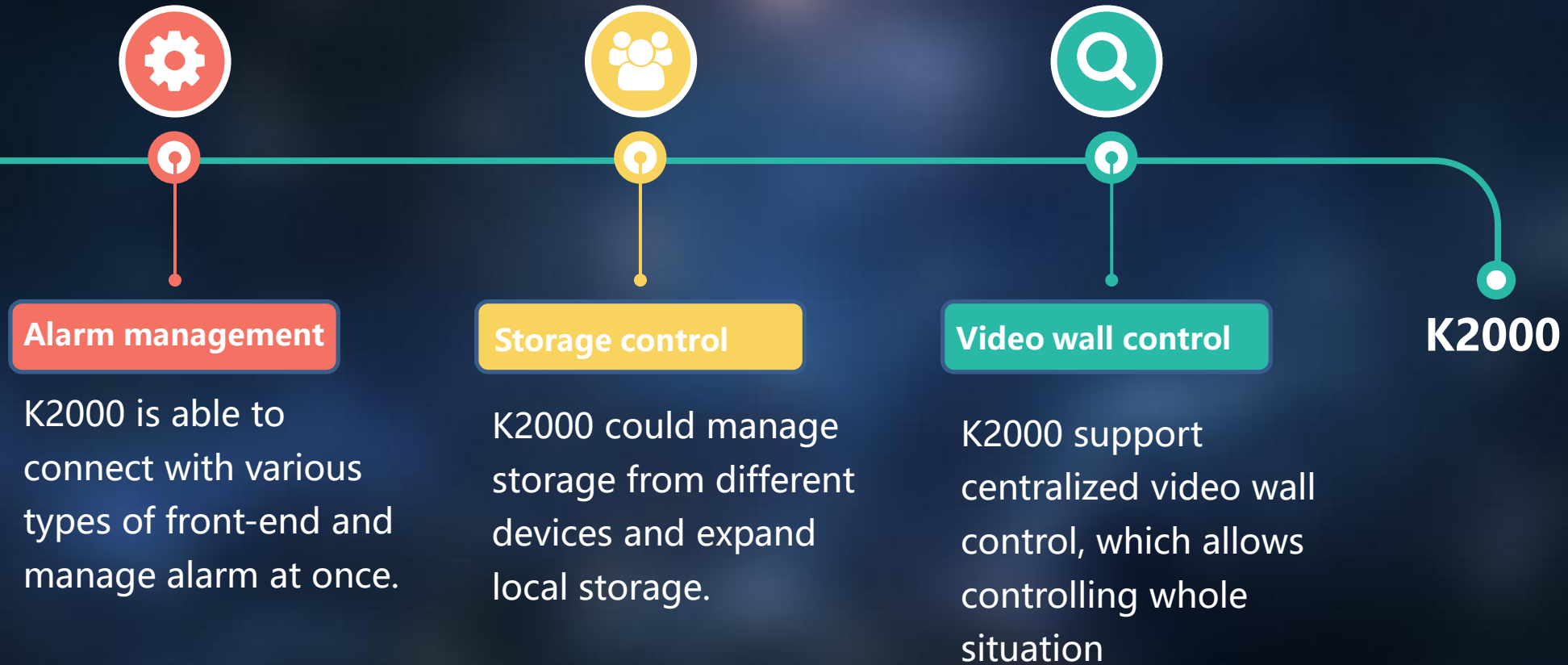


Decoder



- K2000 can be connected to the decoder to realize the center-sub-center hierarchical structure management.

# Centralized management system structure





# CONTENTS

---

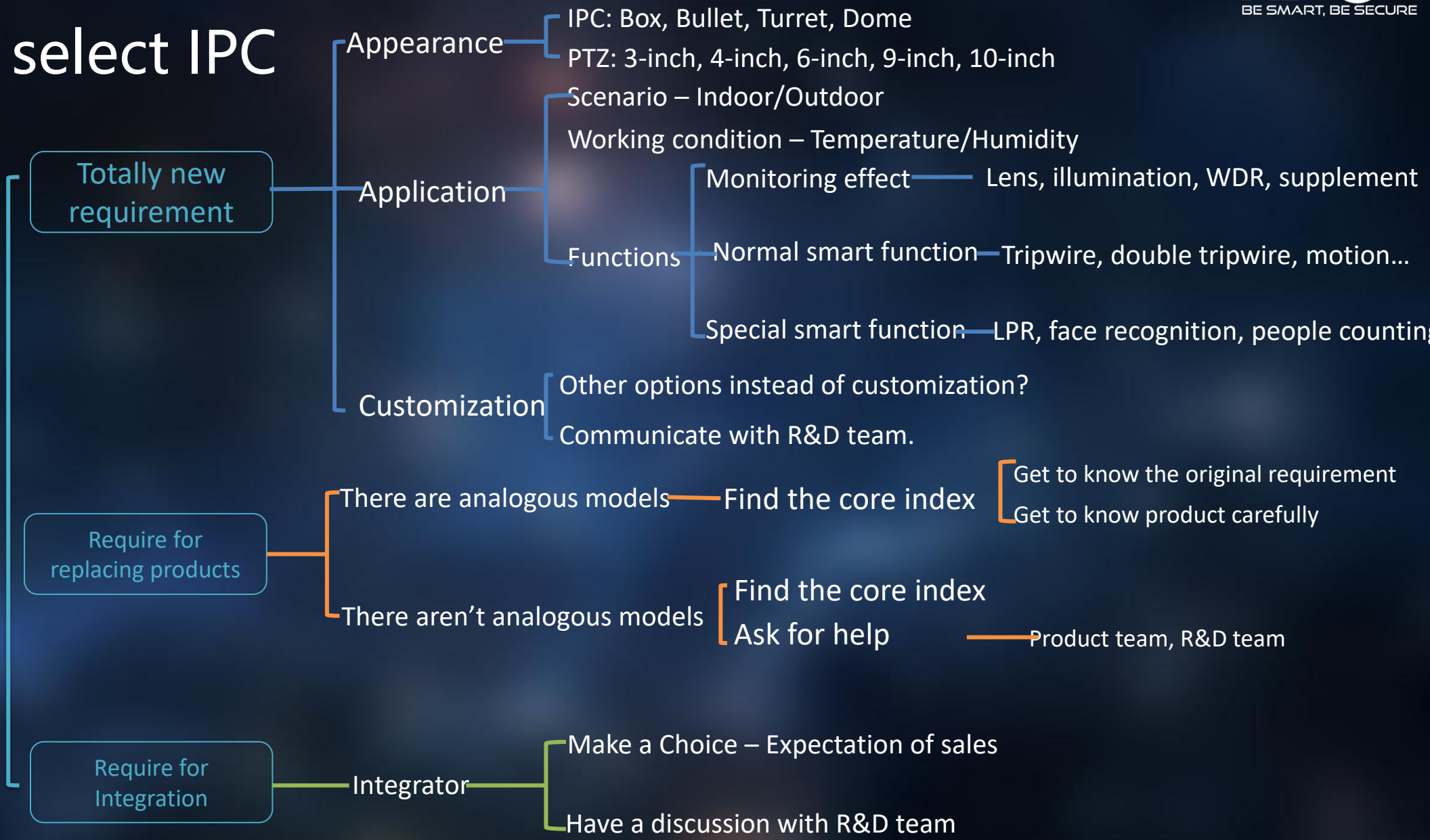
## 03 HOW TO SELECT PRODUCTS

---

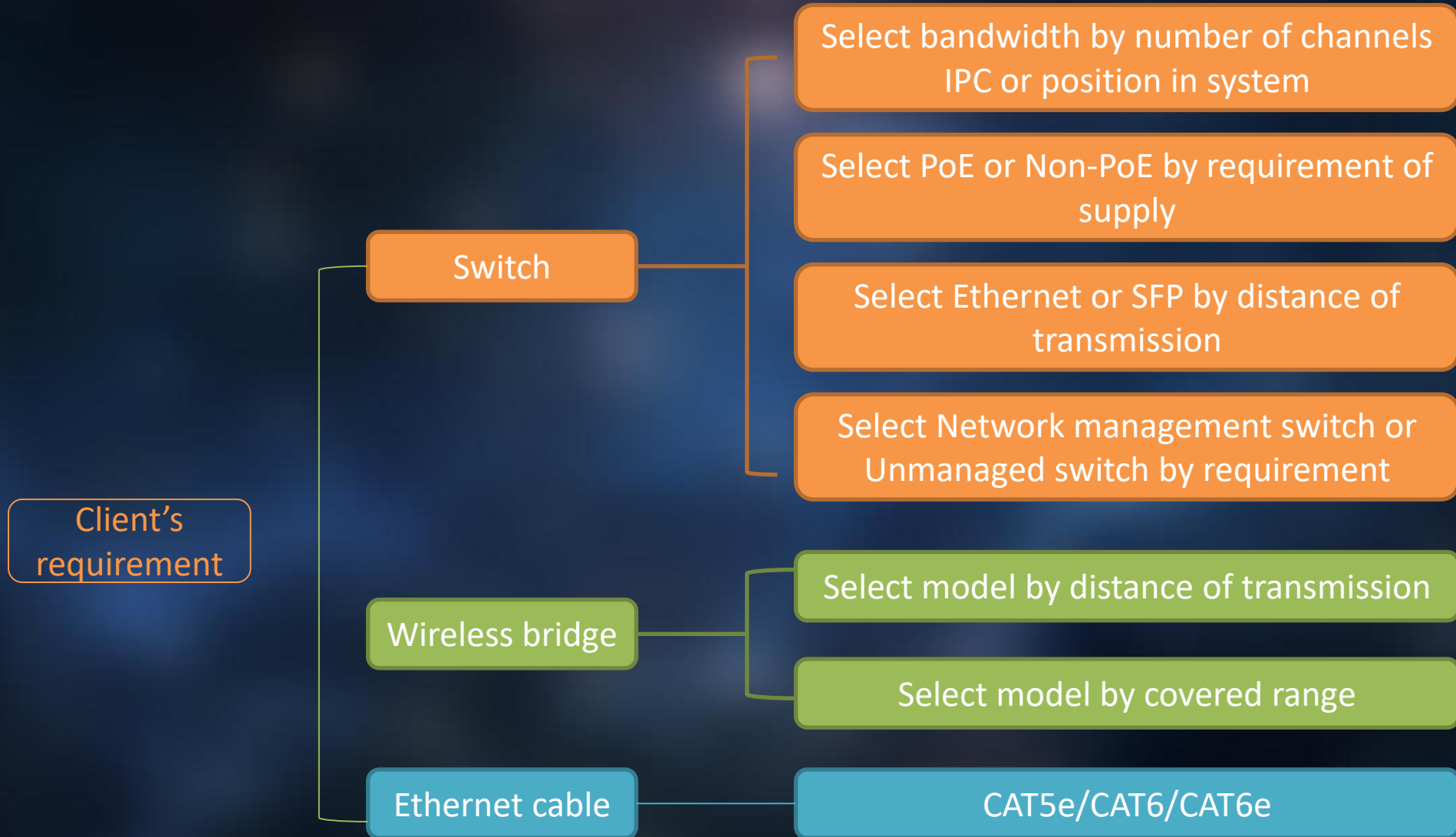


# How to select IPC

**Client's requirement**

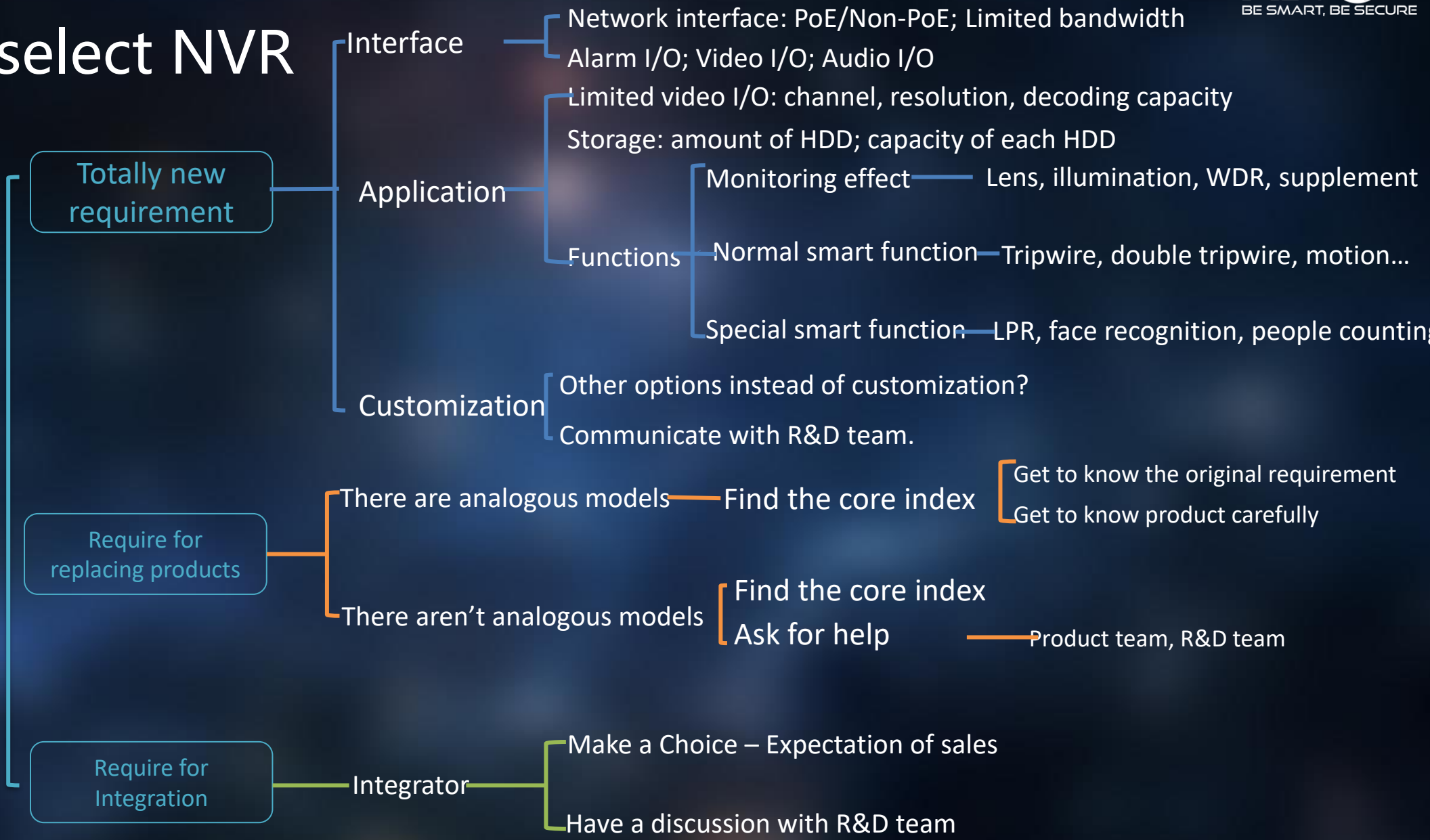


# How to select transmission product



# How to select NVR

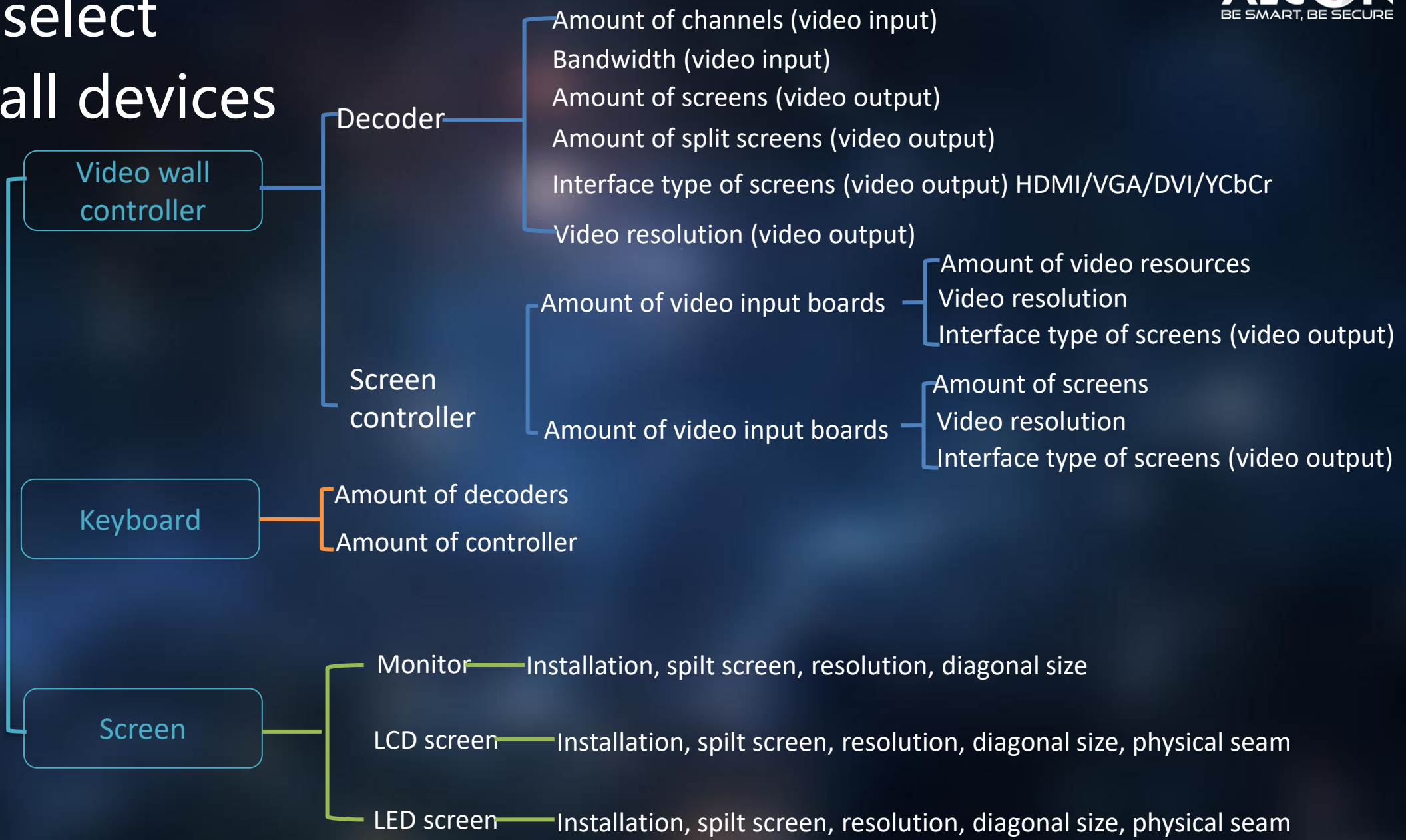
**Client's requirement**





# How to select video wall devices

Client's requirement



# CONTENTS

---

## 04 ADVANTAGES

---



# ADVANTAGES

Centralized system



## Centralized management

- Management video live view
- Management video storage
- Management alarm
- Management intelligent functions
- Management early warning
- Management video wall
- Management face recognition system
- Management LPR system
- Management people counting system

.....



## Easy Control

- Remote control whole system
- Modular structure, easy to control
- Powerful database
- High compatibility
- High stability
- Control multi-sites at the same time

.....

# ADVANTAGES

Stand-alone system



## All-in-one management

Management video live view  
Management video storage  
Management alarm  
Management intelligent functions  
Management early warning  
Management face recognition system  
Management LPR system  
Management people counting system  
.....



## Economic solution

Reduce amount of equipment, reduce cost  
All-in-one design, reduce the maintenance cost  
Build-in storage sever, improve stability of safety  
Easy configuration & installation, reduce cost of workers  
.....



## Stable design

RAID technology  
Redundant power supply

# STANDARD SOLUTION

## 300-2000 IPC



**Alcon Wireless Pvt. Ltd.**

